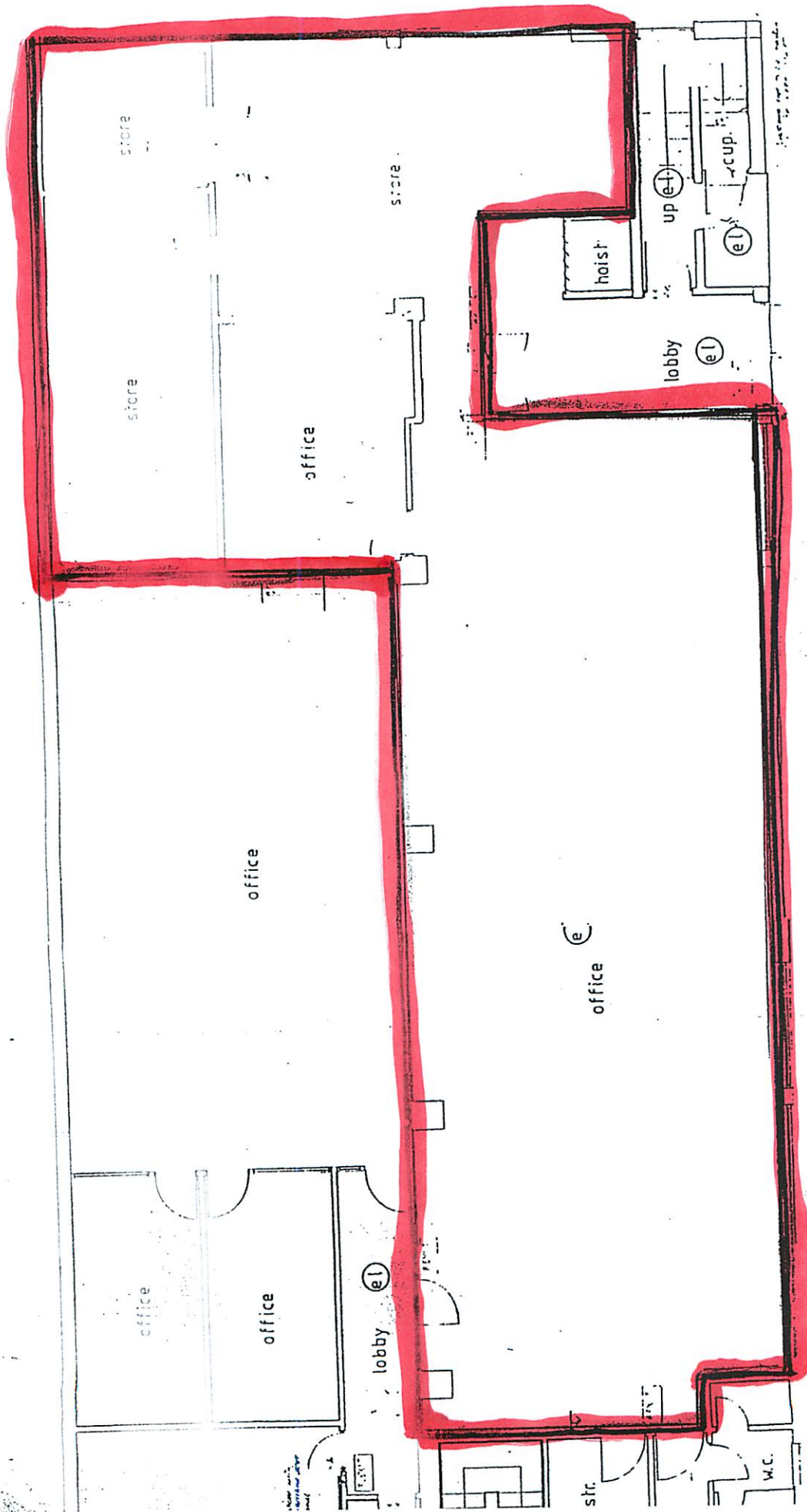


PLAN No 1
OFFICE.

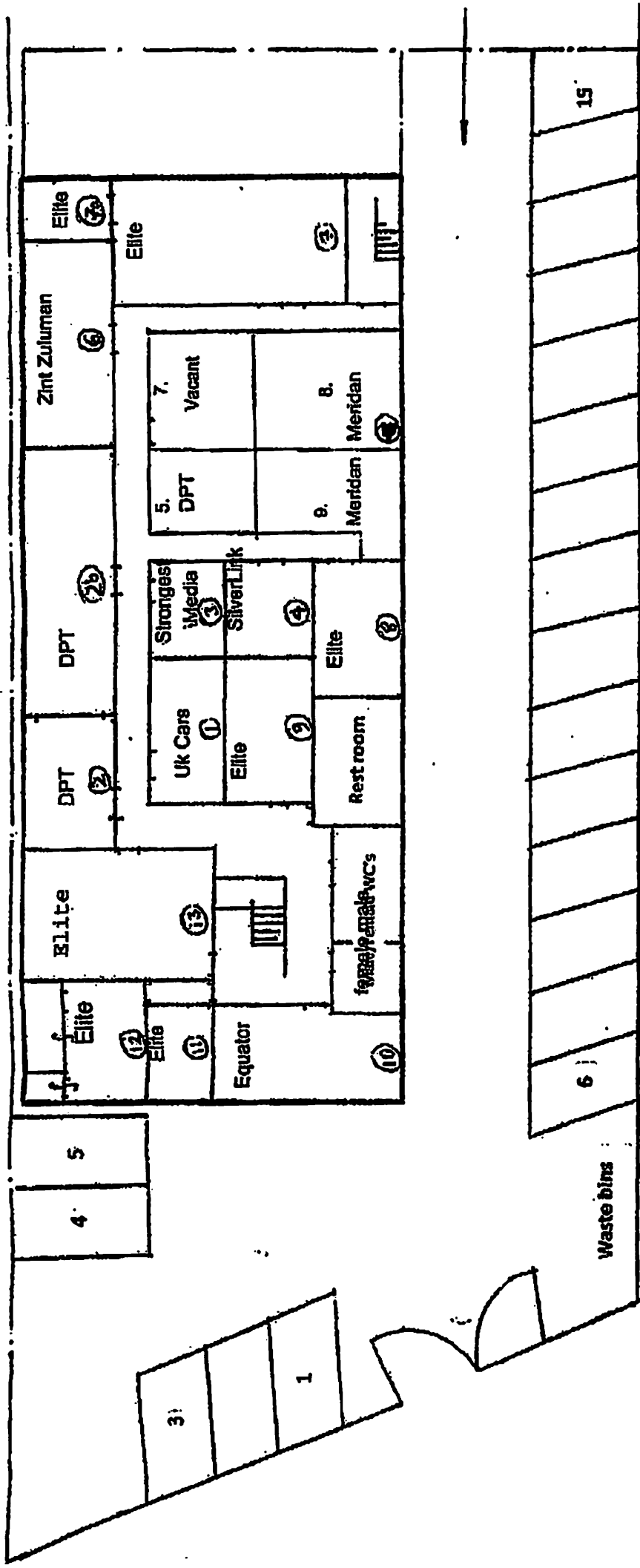


22A

GROUND FLOOR

£ A.O. Maurice J. Munk

FIRST FLOOR



BROOKLANDS BUSINESS CENTRE,
Petersfield Avenue, Slough, Bucks SL2 5DY

Large office (5) was converted
into 4 small offices with
new numbers

Approx. scale :- 0.5 cm = 1 m
Site plan and car spaces diagrammatic.