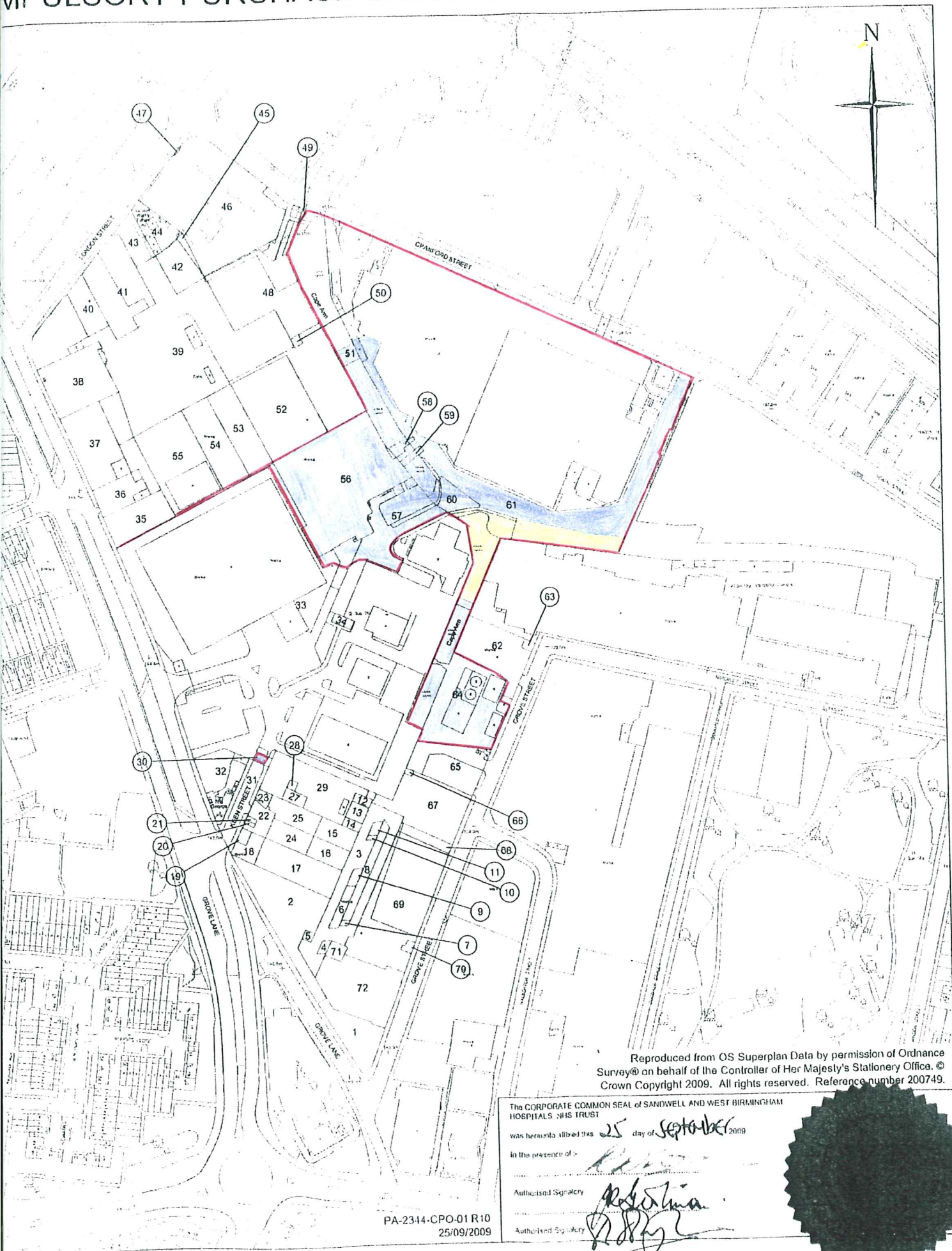


SANDWELL AND WEST BIRMINGHAM HOSPITALS NHS TRUST COMPULSORY PURCHASE ORDER 2009



Reproduced from OS Superplan Data by permission of Ordnance Survey® on behalf of the Controller of Her Majesty's Stationery Office. © Crown Copyright 2009. All rights reserved. Reference number 200749.

The CORPORATE COMMON SEAL of SANDWELL AND WEST BIRMINGHAM HOSPITALS NHS TRUST
 was hereunto affixed this 25 day of September 2009
 in the presence of -
 Authorised Signatory [Signature]
 Authorised Signatory [Signature]

PA-2314-CPO-01 R10
25/09/2009

